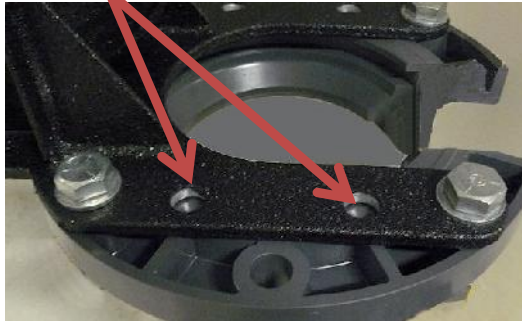


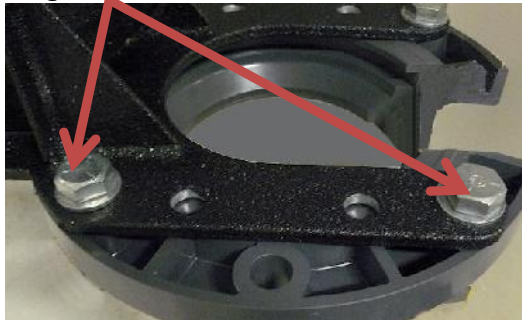
The QED Pump Puller was designed to facilitate the removal of pumps from deep wells. The pump tubing is laid over the rotating wheel (pulley), allowing the tubing to be pulled horizontally (without kinking), as the operator(s) walks away from the well.

The Pump Puller can be used with 6" or 8" flanges.

Use these bolt holes for 6" flanges.



Use these bolt holes for 8" flanges.



Flange Kits

For wells without flanges, QED has 6" and 8" flange kits that include a ratchet strap for securing the flange onto the well.

When using the flange kits, be sure to place the ratchet strap low enough that it does not come in contact with the flange bolts:



Video instructions for using the ratchet straps can be found at:

<https://www.youtube.com/watch?v=1kE4xnA-eEY>

Or see the instructions below.

Ratchet Strap Buckle Threading & Tensioning Instructions.



1. To thread ratchet buckle, place webbing THROUGH slot in center, rotating spool of closed ratchet.



2. Pull webbing through, leaving some slack.



3. Start ratcheting (raising and lowering handle).



4. Webbing will wind itself and be locked in place so that further ratcheting will rapidly increase tension in strap.

Ratchet Tie Down Buckle Release Instructions.



1. To release webbing, pull and hold release tab on top assembly to override ratcheting function.



2. . . and open ratchet until both assemblies are in-line and top assembly clicks into detent.



3. Grab webbing from non-fixed side and pull to release webbing.



4. Pull and hold release tab on top assembly to release from detent. Close ratchet.